



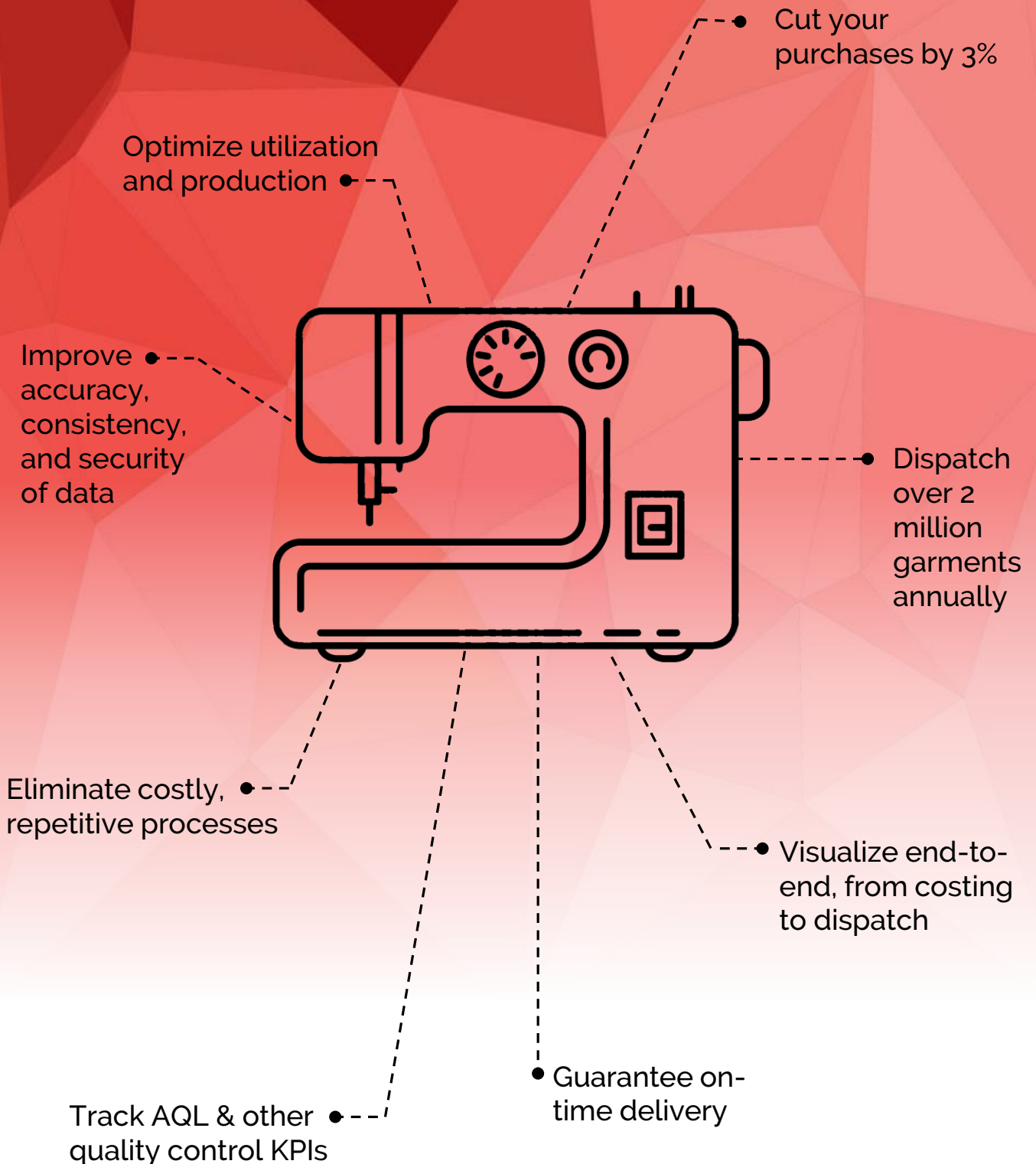
"business software that goes **beyond ERP**"

**A FULLY INTEGRATED**  
management system for  
garment manufacturers  
and sourcers



# Business Benefits

Upon implementation of ApparelConnect, you can...



# Modules



## Product Development

Streamlines new garment style processes, from customer enquiry to approved prototypes



## Style Costing & Budgeting

Maintains sophisticated functionalities to regulate the costing of styles—including make, material, and more



## Sample Approvals

Handles all aspects and components of sampling between buyers and manufacturers



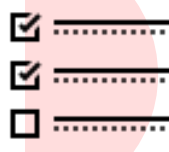
## Buyer Orders

Manages and provides full visibility of order and contract processing—from order receipt to customer invoice



## Material Fabrication

Designs and aligns fabrication processes in terms of raw material needs and specifications



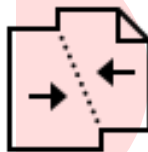
## Material Requirements

Allocates and books materials and components to ensure on-time production



## Outsourcing & Procurements

Tracks and supports outsourced jobs—from locating liable sources to the receipt of jobs



## Integrated Workflow

Provides complete data visibility across all business processes, ensuring smooth and reliable workflow

# Modules



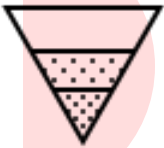
## Warehousing & Inventory Control

Provides complete control over inventory and warehousing processes across all SKUs



## Collaborative Supplier Portal

Maintains a collaborative workspace where information is readily accessible to manufacturers and suppliers



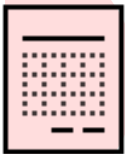
## Production Planning & WIP

Organizes a production strategy, achieving optimal utilization of available and required resources



## Quality Control & AQL

Allows real-time quality control and AQL tracking by letting users set up their own categories, defect groups, and checklists



## Packing & Invoicing

Features a complete pre-packing, packing, and invoicing module for both local and international distribution



## Dashboards

Allows users to build dynamic dashboards and comprehensive reports to showcase real-time results



## Data Security & Multi-Level Approval

Ensures reliability of data through security updates, permissions and approvals, reports, and support

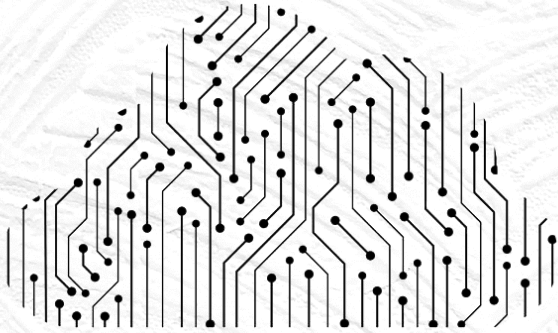


## Finance & Accounting

Provides a workspace to accurately prepare financial accounts with user friendly transaction entry screens and integrated information

# FEATURES

## TO focus ON

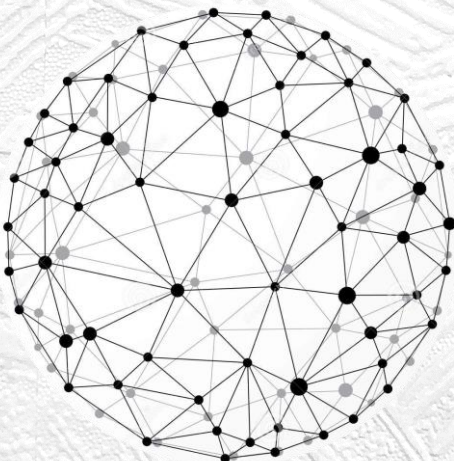
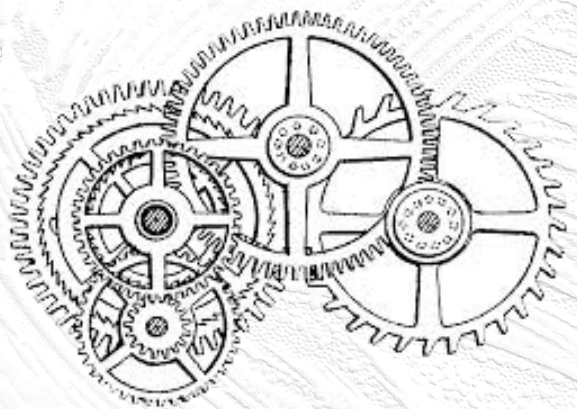


### INcloud

With ApparelConnect moving to the cloud, information will be at the tip of your fingers, whenever, wherever! Data reliability, cost savings, and improved performance are just some of the benefits to look out for.

### EASE of use

Through all modules and screens, our focus is centered towards user functionality. Our software is easy to operate, with straightforward access to essential features and commands. All interfaces are customizable, ensuring the ultimate user experience.



### A-Z coverage

Our ERP software has been engineered in order to support configurations for any entity requirement – small or large. ApparelConnect provides a comprehensive solution from an experienced provider. **We know the clothing industry** and we can guarantee full support for all required business features!



Since adopting **ApparelConnect**, we have seen a significant uplift in efficiency, cost control, and productivity. The unlimited license model has saved us money and we are pleased to have implemented the software throughout our company.

**NAYAN KALIDAS**  
Managing Director  
Vimal Clothing c.c. (Durban)

Give your business a competitive edge...

**CONTACT US NOW FOR A DEMO!**

**Representative Office (India)**

3, Vikram Vihar Ext. Lajpat Nagar 4,  
New Delhi 110024, India

+91 96065 38777

[support@apparelconnect.com](mailto:support@apparelconnect.com)

**Development Center (Thailand)**

96 – 98 Charansanitwong 13, Thaphra,  
Bangkok 10600, Thailand

+66 (0) 2 412 2115

[info@dbsolutionsthailand.com](mailto:info@dbsolutionsthailand.com)

